

PLAT OF SEWALL'S MEADOW

Being a replat of a portion of Lot One of the Miles or Hanson Grant, according to the map of Commissioners' Subdivision of said Grant, recorded in Plat Book B, Page 59, public records of Dade (now Martin) County, Florida. TOWN OF SEWALL'S POINT, MARTIN COUNTY, FLORIDA APRIL, 1997

CLERK'S RECORDING CERTIFICATE

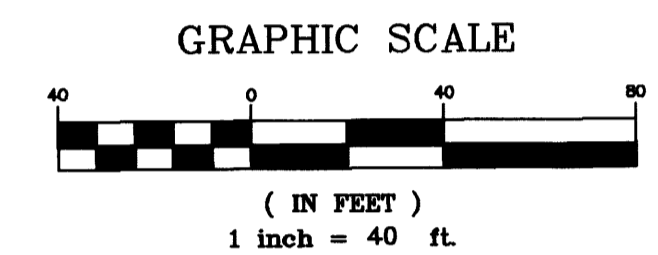
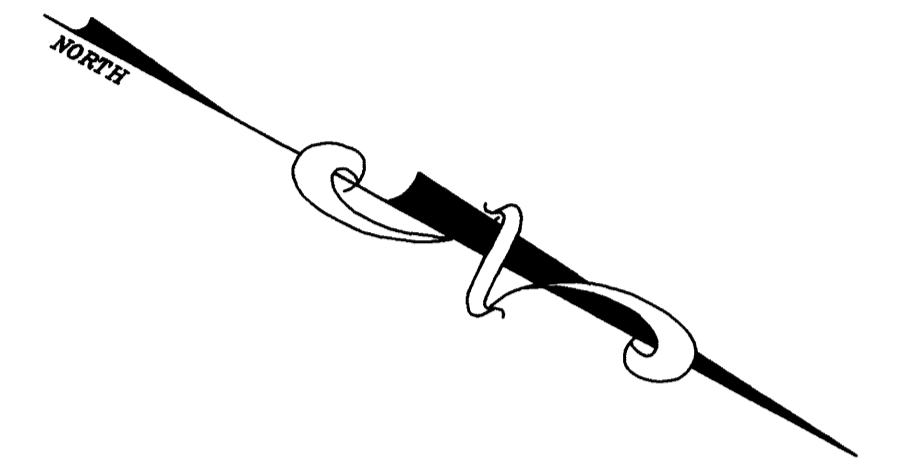
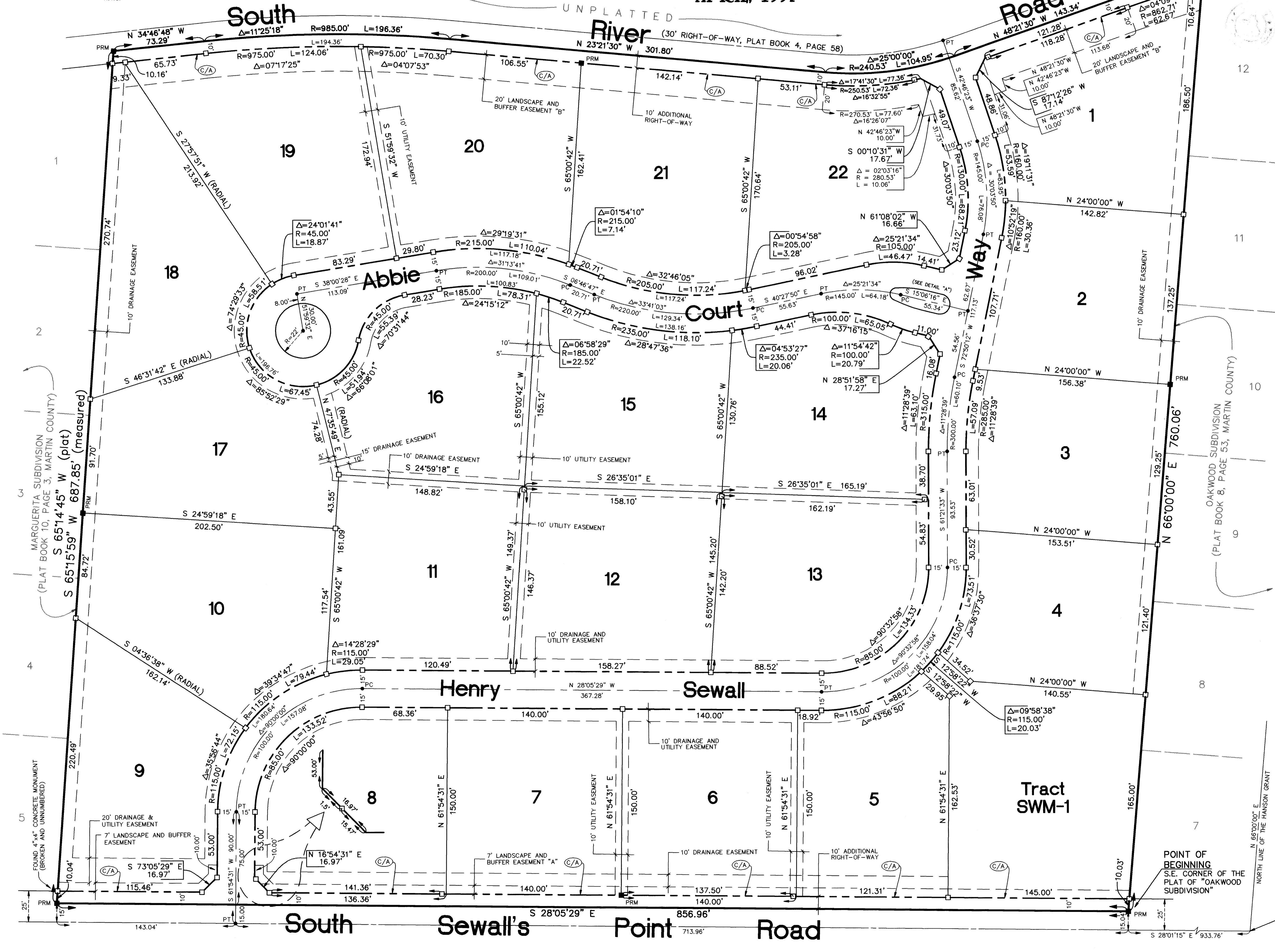
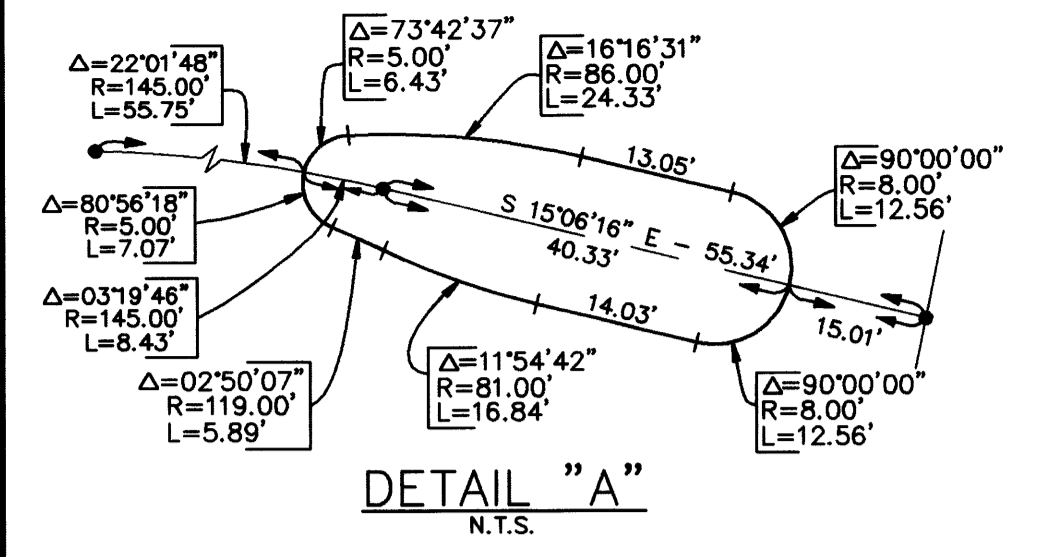
I, MARSHA STILLER, CLERK OF THE CIRCUIT COURT OF MARTIN COUNTY, FLORIDA, HEREBY CERTIFY THAT THIS PLAT WAS FILED FOR RECORD IN

PLAT BOOK 14, PAGE 32, MARTIN COUNTY, FLORIDA, PUBLIC RECORDS THIS 8th DAY OF MAY, 1997 MARSHA STILLER, CLERK OF THE CIRCUIT COURT MARTIN COUNTY, FLORIDA.

FILE NUMBER 1233350 BY Charlotte Surley DEPUTY CLERK

13-38-41-000-000-00060.40000

SUBDIVISION PARCEL CONTROL NO.



- LEGEND**
- = SET PERMANENT CONTROL POINT (P.C.P.) P.K. NAIL & WASHER LABELED "LB 4108"
 - = SET PERMANENT REFERENCE MONUMENT (P.R.M.) 4"x4" CONCRETE MONUMENT WITH DISK LABELED "GCY INC. P.R.M. LB 4108, PSM 4864"
 - = SET 4"x4" CONCRETE MONUMENT WITH DISK LABELED "GCY, INC. LB 4108"
 - PRM = PERMANENT REFERENCE MONUMENT
 - PSM = PROFESSIONAL SURVEYOR & MAPPER
 - LB = LAND SURVEY BUSINESS
 - Δ = DELTA
 - R = RADIUS
 - L = LENGTH
 - PC = POINT OF CURVATURE
 - PT = POINT OF TANGENCY
 - C/A = CONTROL OF ACCESS (SEE SURVEYOR'S NOTE NO. 5)

SURVEYORS NOTES

1. There shall be no lot splits except to create larger lots.
2. There shall be no construction or maintenance of walls, fences or other structures or trees within the drainage easements which would impede drainage or maintenance of the easement.
3. There shall be no building or other permanent structures or trees placed on utility easements.
4. Bearings shown hereon are referenced to the North line of the Hanson Grant. Said line bearing South 66°00'00" West.
5. Property lines shown with the C/A (Control of Access) symbol shall have no vehicular access.
6. Lots 5 through 9 adjacent to South Sewall's Point Road and Lots 1 and 19 through 22 adjacent to South River Road shall have twenty-five (25) foot setbacks from the property line adjacent to said roads, as provided in Resolution No. 486 of the Town of Sewall's Point, Florida.
7. South River Road as shown hereon is based on plat entitled "Road right-of-way on Sewall's Point" as recorded in Plat Book 4, Page 58 of the public records of Martin County, Florida.

NOTICE

There may be additional restrictions that are not recorded on this plat that may be found in the public records of this county.

GCY
INCORPORATED
CIVIL ENGINEERS / LAND SURVEYORS
1505 S.W. MARTIN HIGHWAY P.O. BOX 1469
PALM CITY, FLORIDA 34991 (561-286-8083)
5601 CORPORATE WAY, SUITE 314,
WEST PALM BEACH, FLORIDA 33407 (561-697-3667)
CERTIFICATE OF AUTHORIZATION LB 4108